

Healthy Indoor Environments

Safe and hygienic indoor environments are important for public health. Clatsop County Environmental Health licenses and inspects travel accommodations such as hotels, motels, bed and breakfasts, and organizational camps. In addition, we offer resources for the general public to recognize and mitigate hazards inside their homes.

Travel Accommodations



The Clatsop County Environmental Health inspects select public facilities for compliance with Oregon Health Authority rules. The goal of these inspections is to ensure the protection of the health and welfare of persons using these facilities.

These links provide access to Oregon Administrative Rules established by the Oregon Health Authority as well as application materials associated with each type of facility.

Motels/Hotels

Tourist accommodations are inspected at least once every 24 months. Inspectors evaluate the general condition of the facility, beds and bedding, rooms, handling of dishware, and general safety.

Bed and Breakfasts

Bed and breakfast establishments that are licensed in Oregon are single-family residences that offer more than 2 rooms for rent to the public, and offer solely a breakfast meal as part of the cost of the room.

Bed and breakfast facilities are inspected annually for the general condition of the building, beds, bedding, lavatory facilities, and food service according to the Oregon Food Sanitation Rules.

Recreational Vehicle Parks

Recreational Vehicle (RV) parks are inspected twice per year. Facilities are inspected for proper water and sewer connections, egress from the park, spacing between vehicles, condition of restrooms, showers, garbage facilities, and pet facilities.

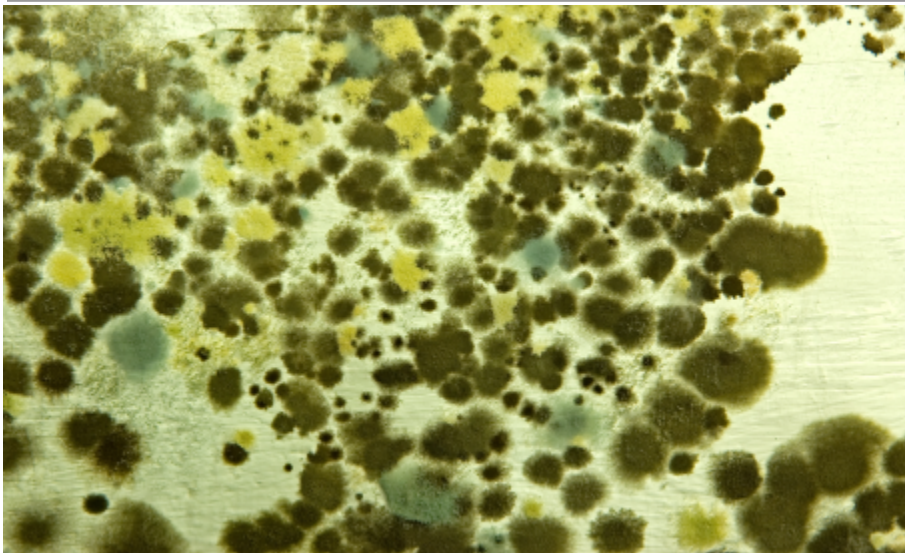
Organizational Camps

Organizational camps are inspected at least once per year. Areas of focus during inspections include food service, housing, bedding, showers and toilets, drinking water and septic systems (if applicable); program areas, training of staff, and appropriate health services.

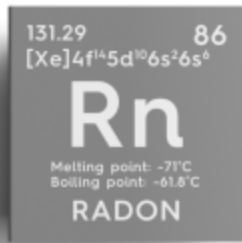
Daycare Facilities

Upon request we provide health and sanitation consultants and inspections for child daycare centers for the licensing authority, the State of Oregon Employment Department, Child Care Division. To contact a childcare certifier at the State of Oregon Child Care Division, call (503) 669-7112, Ext. 4, or visit [Oregon Early Learning](#).

More Healthy Indoor Environment Information



[Mold](#)



Radon



Pesticides



Healthy Homes and Neighborhoods