

Clatsop County Parks - Natural Resources Inventory and Stewardship Plan

Smith Lake

T 8 N R 10 W, Section 33

Elevation: 20'-25'
2.5 acres

Legend

Roads(by Type)

— 'Paved'

Wildlife features(by Type)

🦅 'Bald Eagle Nest'

--- Trails

Issues(by Type)

🚧 'Unsafe trail log'

Invasive plants(by Type)

● 'english holly'

● 'english ivy'

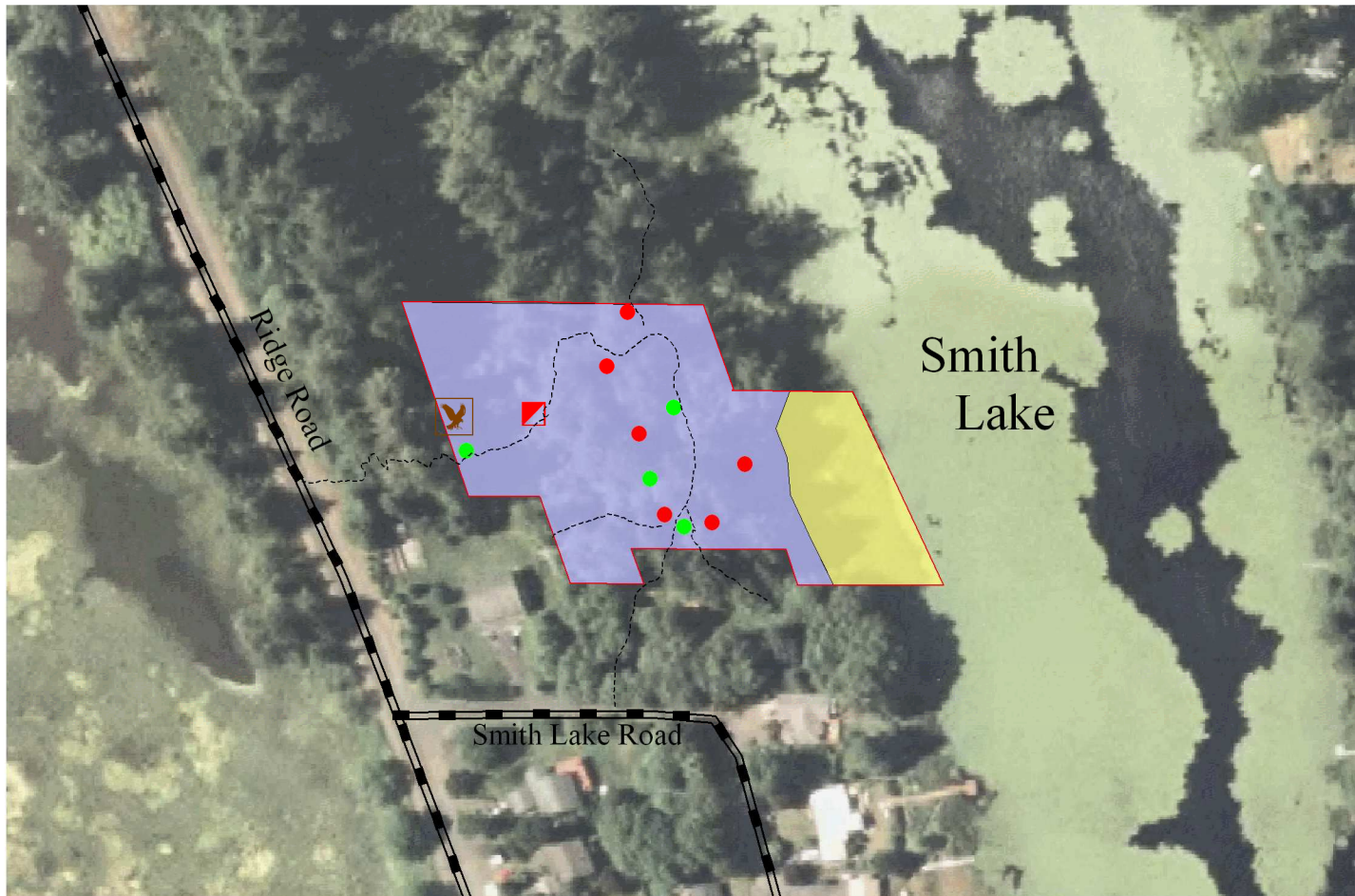
□ Property Line

Vegetation types(by DESCRIPTION)

■ 'Wetland Forest'

■ 'Wetland Shrub'

📷 2005 aerial photo



400 0 US Feet
Scale = 1 : 200.00 (In : US Feet)

