

Clatsop County Parks - Natural Resources Inventory and Stewardship Plan

North Fork Nehalem

T 4 N, R 9 W, Section 22

Elevation: 150'-180'

2.8 acres

Legend

--- Roads

□ County Parks

Invasive plants(by Type)

● 'english holly'

● 'scotch broom'

⌘ Gates

Trails(by Condition)

--- 'Dirt'

== 'Paved'

Vegetation type(by DESCRIPTION)

□ 'Road'

□ 'Alder (40 year old)'

□ 'Mixed conifer (100 year old)'

□ 'River/riparian'

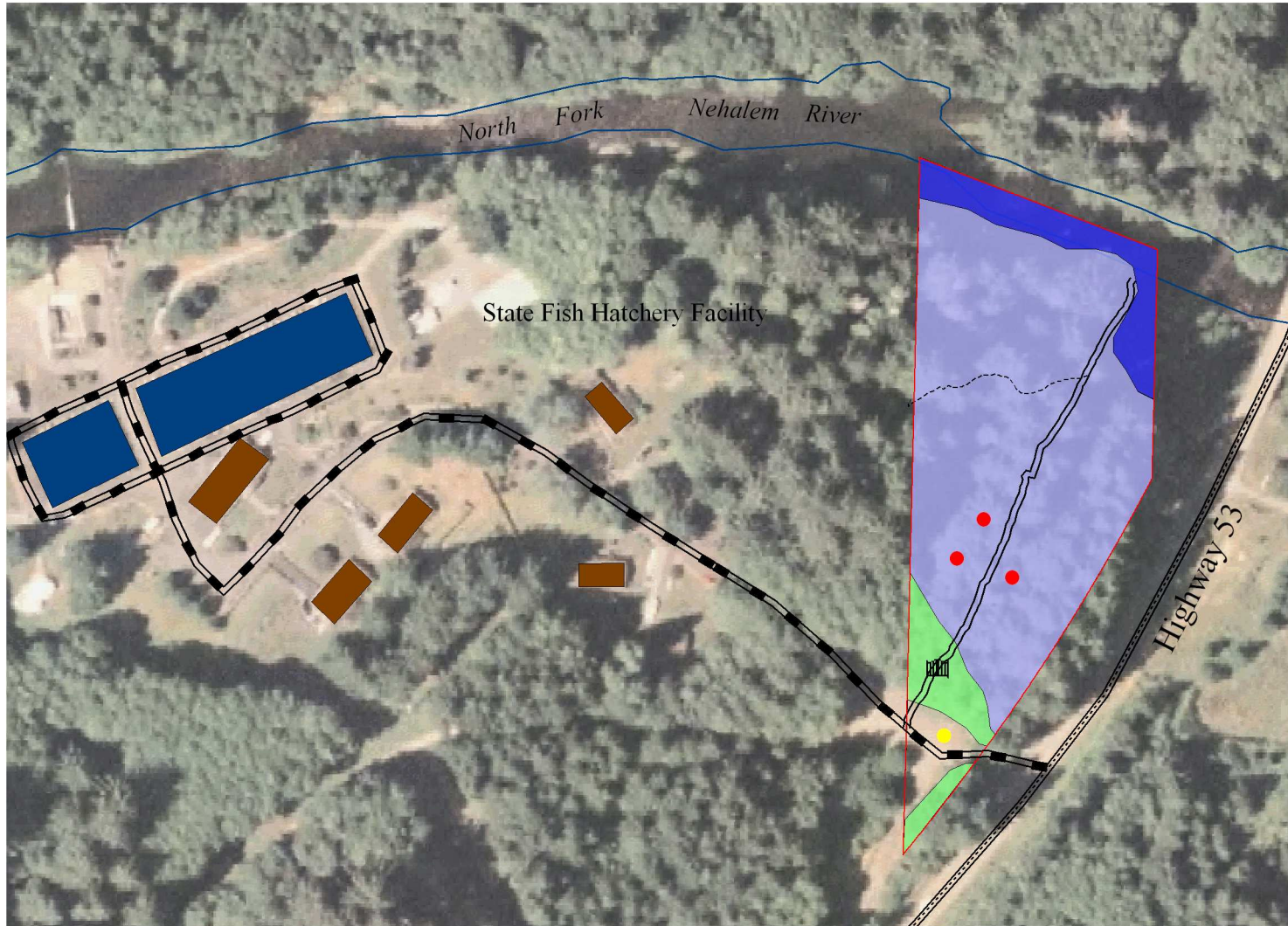
□ Streams

Hatchery facilities(by Type)

■ 'Building'

■ 'Hatchery'

2005 aerial photo



400 0 US Feet
Scale = 1 : 175.00 (In : US Feet)

